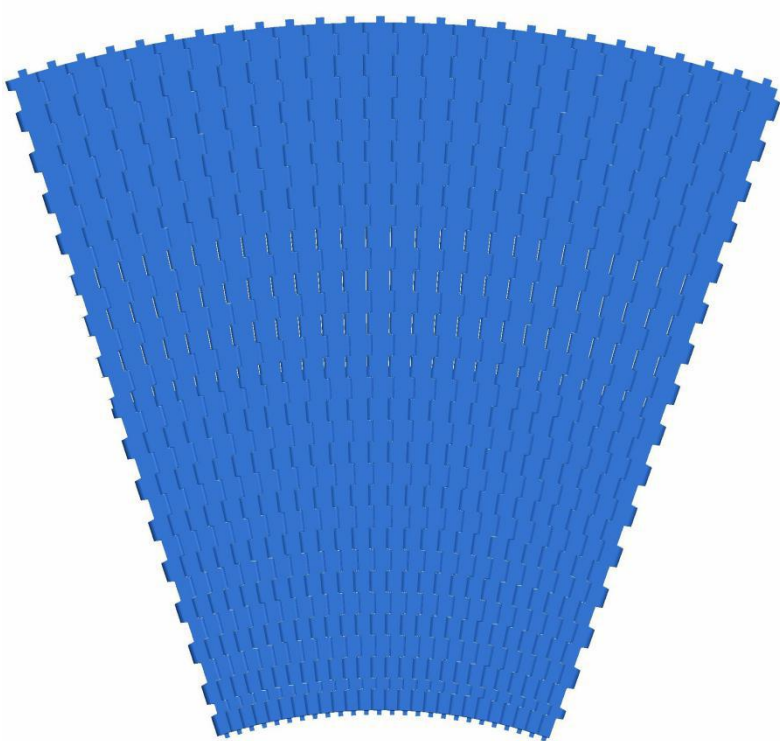


HS-2000A-GB Technical Data Sheet



|   |  |
|---|--|
| Fixed Radius: 600mm<br>Minimum Width: 200mm<br>Open Area: 0%<br>Approved: FDA<br>Rod: Ø 4.9mm<br>Flight: No<br>Side Guard: No<br>Curve: Yes |  |
|---|--|

## Data

| Belt Material | Belt Strength |         | Temperature |           |
|---------------|---------------|---------|-------------|-----------|
|               | Straight      |         | °C (min.)   | °C (max.) |
|               | Kg/M(BW)      | N/M(BW) |             |           |
| Polypropylene | 1600          | 16000   | 1           | 100       |
| Polyethylene  | 1550          | 15500   | -60         | 60        |
| Acetal        | 2640          | 26400   | -40         | 80        |
| Nylon         | 2230          | 22300   | 1           | 180       |

BW – Belt Width

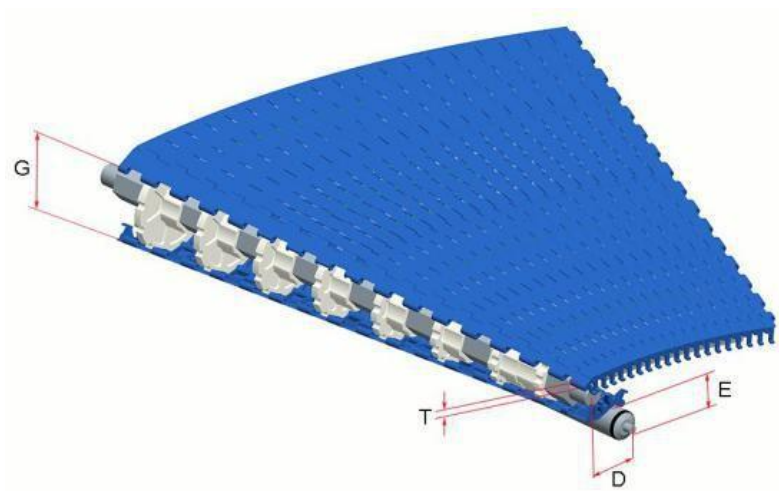
## Color Table

| Polypropylene |   |   | Polyethylene |   |   |   | Acetal |    |   |   | Nylon |   |    |   |   |   |   |    |   |
|---------------|---|---|--------------|---|---|---|--------|----|---|---|-------|---|----|---|---|---|---|----|---|
| W             | G | N | DB           | B | W | G | N      | DB | B | W | G     | N | DB | B | W | G | N | DB | B |
| ●             | ● |   |              | ● |   |   | ●      |    |   | ● |       |   |    | ● |   |   |   | ●  |   |

W-White, G-Gray, N-Nature, DB-Darkbrown, B-Blue

## Friction Table

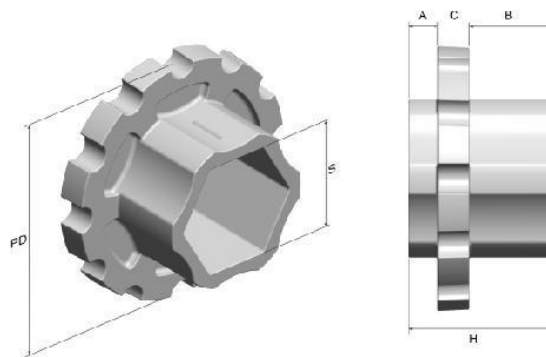
| Belt Material | Friction Wear strips&Products |      |       |       |      |         |           |          |
|---------------|-------------------------------|------|-------|-------|------|---------|-----------|----------|
|               | UHMW                          | HDPE | Steel | Glass | SUS  | Plastic | Cardboard | Aluminum |
| Polypropylene | 0.32                          | 0.24 | 0.15  | 0.09  | 0.13 | 0.08    | 0.15      | 0.25     |
| Polyethylene  | 0.13                          | 0.11 | 0.26  | 0.19  | 0.31 | 0.16    | 0.21      | 0.41     |
| Acetal        | 0.11                          | 0.09 | 0.27  | 0.16  | 0.26 | 0.15    | 0.19      | 0.28     |
| Nylon         | 0.18                          | 0.13 | 0.25  | 0.16  | 0.26 | 0.16    | 0.19      | 0.27     |



**Conveyor Frame Dimensions**

**Unit : mm**

| No. Teeth | D (Min.) | E (Min.) | G    | T  |
|-----------|----------|----------|------|----|
| 12        | 200      | 40       | 5.6° | 10 |

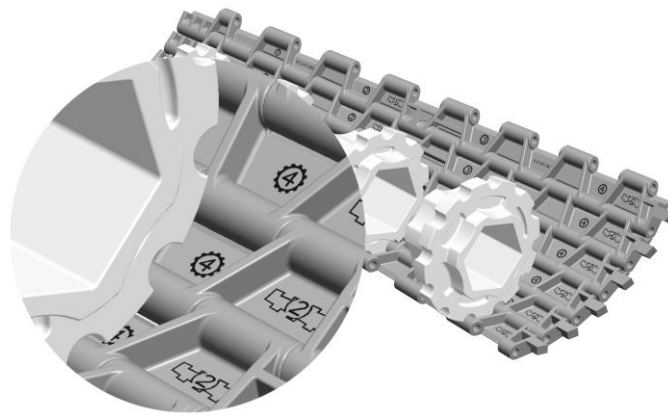


**Sprocket Dimensions**

**Unit: mm**

| Belt Width | Sprocket No. | PD   | S    | A  | B  | C  | H  |
|------------|--------------|------|------|----|----|----|----|
| 200        | 1            | 65   | 41.5 | 35 | 0  | 11 | 46 |
|            | 2            | 72   |      | 10 | 29 |    | 50 |
| 400        | 3            | 80.5 |      | 10 | 29 |    |    |
|            | 4            | 90   |      | 10 | 29 |    |    |
| 600        | 5            | 100  |      | 10 | 29 |    |    |
|            | 6            | 110  |      | 10 | 29 |    |    |
| 800        | 7            | 120  |      | 10 | 29 |    |    |
|            | 8            | 130  |      | 10 | 29 |    |    |

## Installation of sprockets



Please install the sprockets according to the graphical representation.

### **HS-2000A-GB Flat Top Radius Modular Conveyor Belt**

HS-2000A-GB Flat Top Radius Modular Conveyor Belt is developed specially for logistics transportation by HONG'S BELT. The inside turning radius of HS-2000A-GB is 600mm, it is fixed and doesn't change with the width. Max width of HS-2000A-GB is 800mm (For more information of our belt width, pls consult our sales team).

### **Driving Mode of HS-2000A-GB**

For turning conveyors installed with traditional PVC conveyor belt, the belt is fixed with unstable bearing parts, so the life time of it is very short and the structure of the conveying machine is large; At the same time, the belt is driven by smooth roller, so it is easy to slip, which causes the low tension force and usually affects the production.

HS-2000A-GB Flat Top Radius Modular Conveyor Belt is designed with module structure, and is driven by sprockets, which solves the slip of belt and ensure the belt in most stable condition in operation.

The bore of HS-2000A-GB sprocket is 41.5mm hexagon, it can be matched with 41mm standard hexagonal shaft, so it is easy to get and process the raw material, more importantly, this design solves the chordal action of quadrilateral shaft and brings more stable operation.

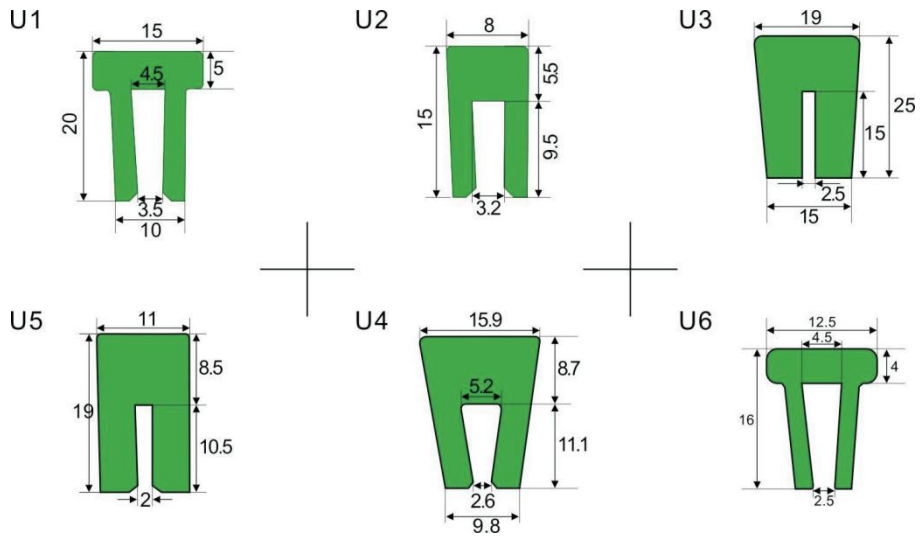
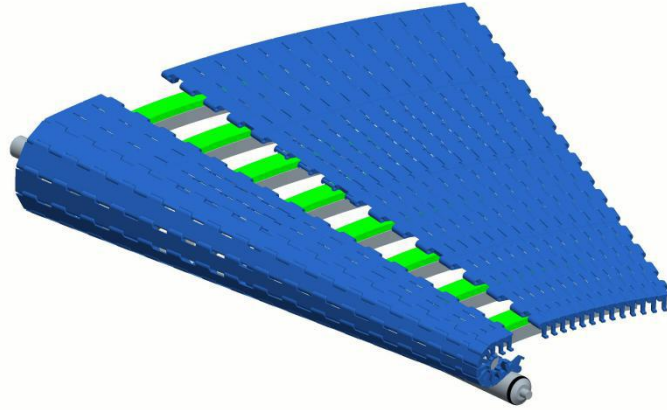
### **Advantages of HS-2000A-GB**

HS-2000A-GB Flat Top Radius Modular Conveyor Belt is stable in operation, and because of its fixed structure design, straight sections are not needed in driving end, which save the manufacturing cost and the space of conveying system.

HS-2000A-GB Flat Top Radius Modular Conveyor Belt is made from Acetal, it can endure instant impact with low friction coefficient and high impact resistance, tensile strength of it is 10 times stronger than common radius PVC Conveyor belt.

HS-2000A-GB Flat Top Radius Modular Conveyor Belt is driven by sprockets, and can endure instant high-speed and big load capacity. It is widely used in Paper, Printing, Beverage, Packaging industry etc. both for light-duty and heavy-duty conveying.

## Guide Rail & Wear Strips



⌘ We have different kinds of guide rail and wear strips for your choice; for more information, please consult our sales team.

